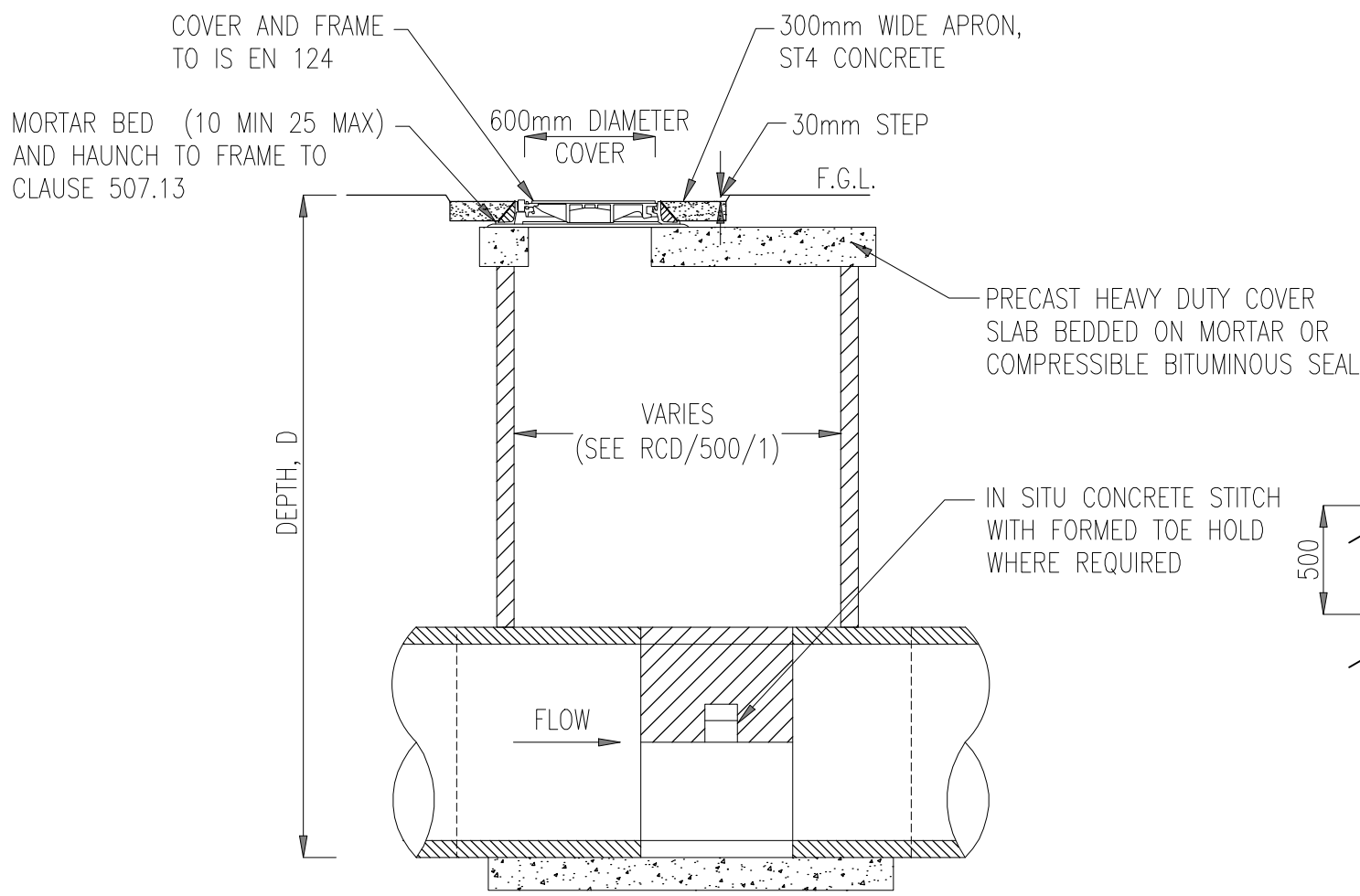
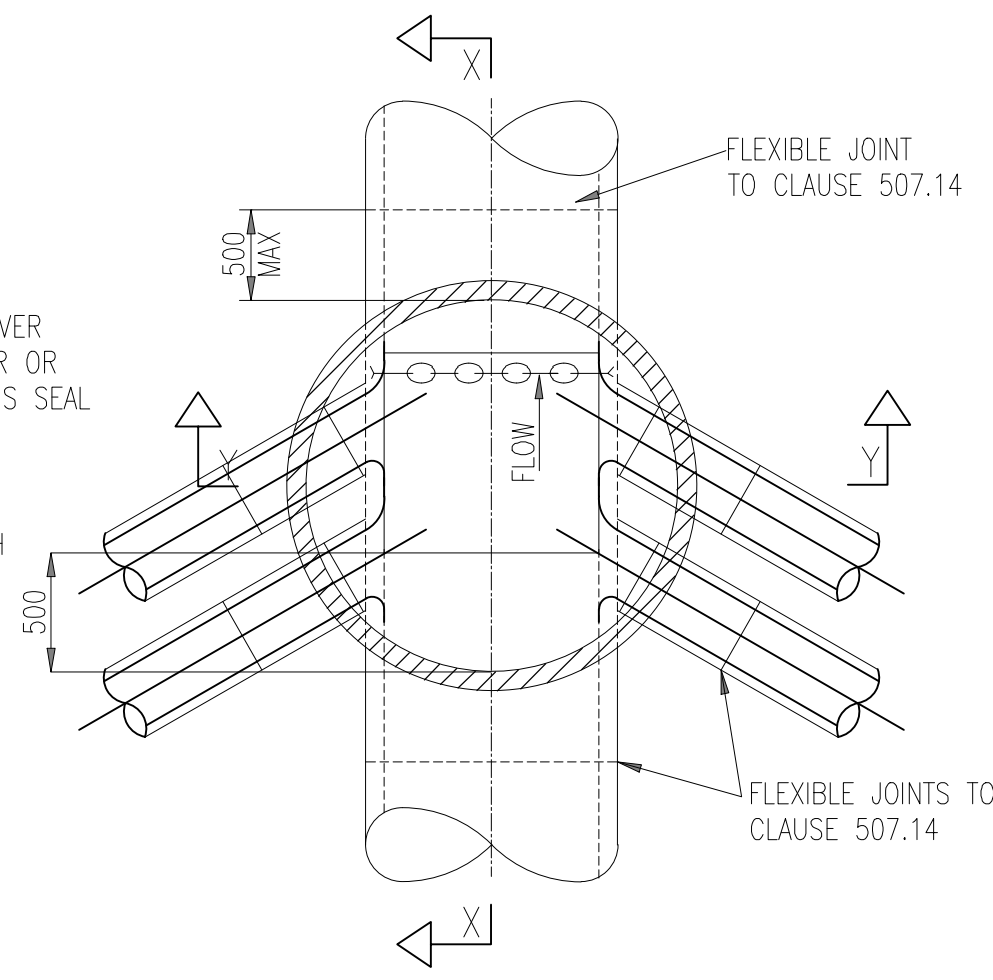


THIS DRAWING IS THE PROPERTY OF MWP ENGINEERING AND ENVIRONMENTAL CONSULTANTS. IT IS TO BE USED FOR THE PROJECT AND SITE SPECIFICALLY IDENTIFIED. IT IS NOT TO BE REPRODUCED, COPIED, OR TRANSMITTED IN ANY FORM OR BY ANY MEANS, ELECTRONIC OR MECHANICAL, INCLUDING PHOTOCOPYING, RECORDING, OR BY ANY INFORMATION STORAGE AND RETRIEVAL SYSTEM, WITHOUT THE WRITTEN PERMISSION OF MWP ENGINEERING AND ENVIRONMENTAL CONSULTANTS. THE USER OF THIS DRAWING IS RESPONSIBLE FOR THE USE OF THIS DRAWING IN ACCORDANCE WITH THE INTENT AND PURPOSE OF THE DRAWING. THE USER OF THIS DRAWING IS RESPONSIBLE FOR THE USE OF THIS DRAWING IN ACCORDANCE WITH THE INTENT AND PURPOSE OF THE DRAWING. THE USER OF THIS DRAWING IS RESPONSIBLE FOR THE USE OF THIS DRAWING IN ACCORDANCE WITH THE INTENT AND PURPOSE OF THE DRAWING.

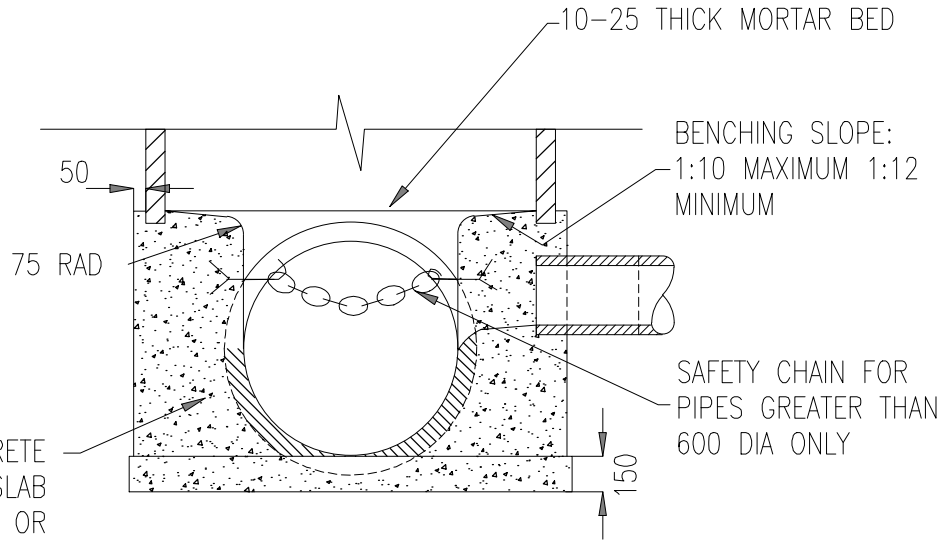


SECTION X-X



PLAN ON STRAIGHT INVERT

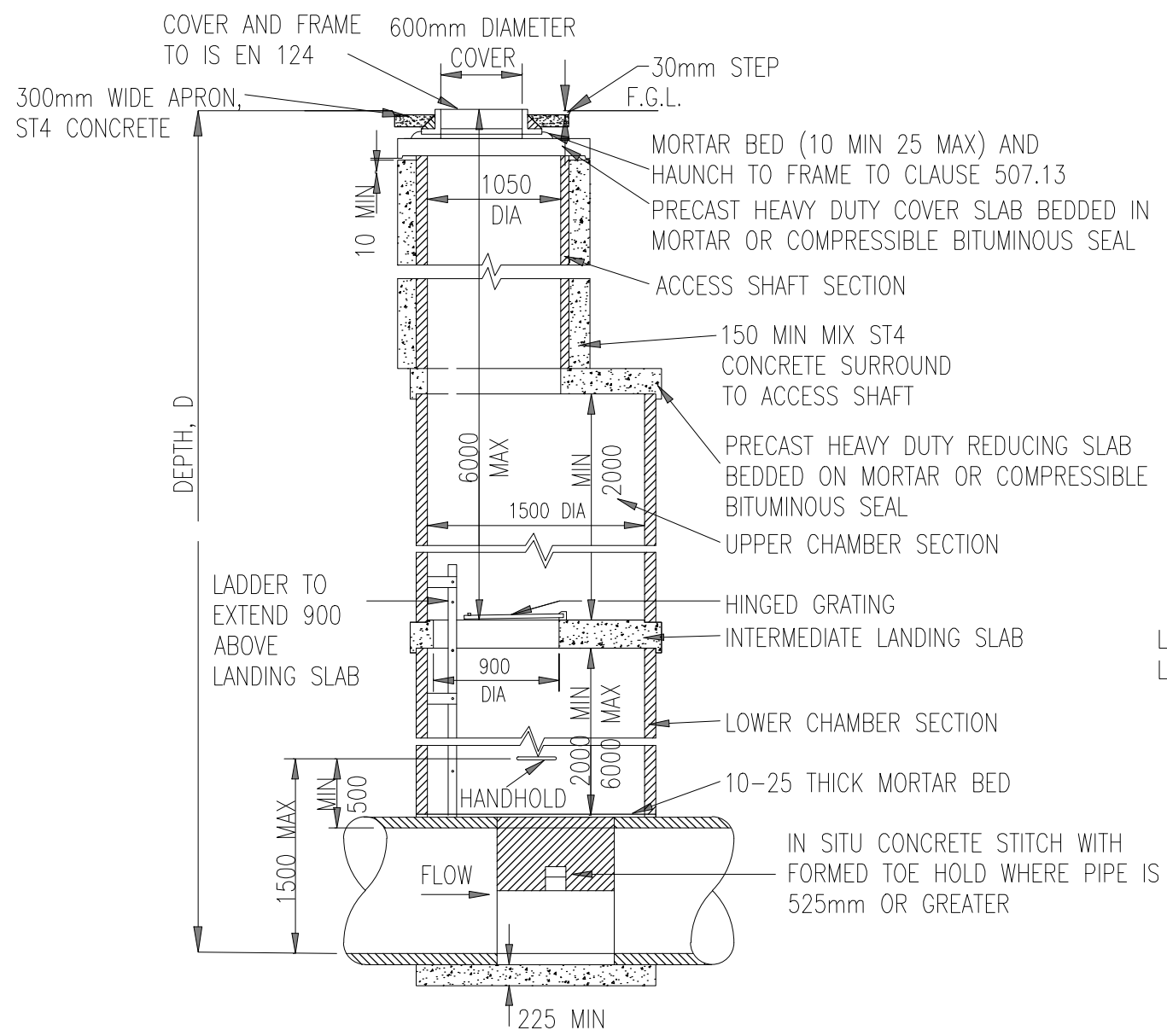
CHAMBER TYPE C
(PRECAST CONCRETE MANHOLE)



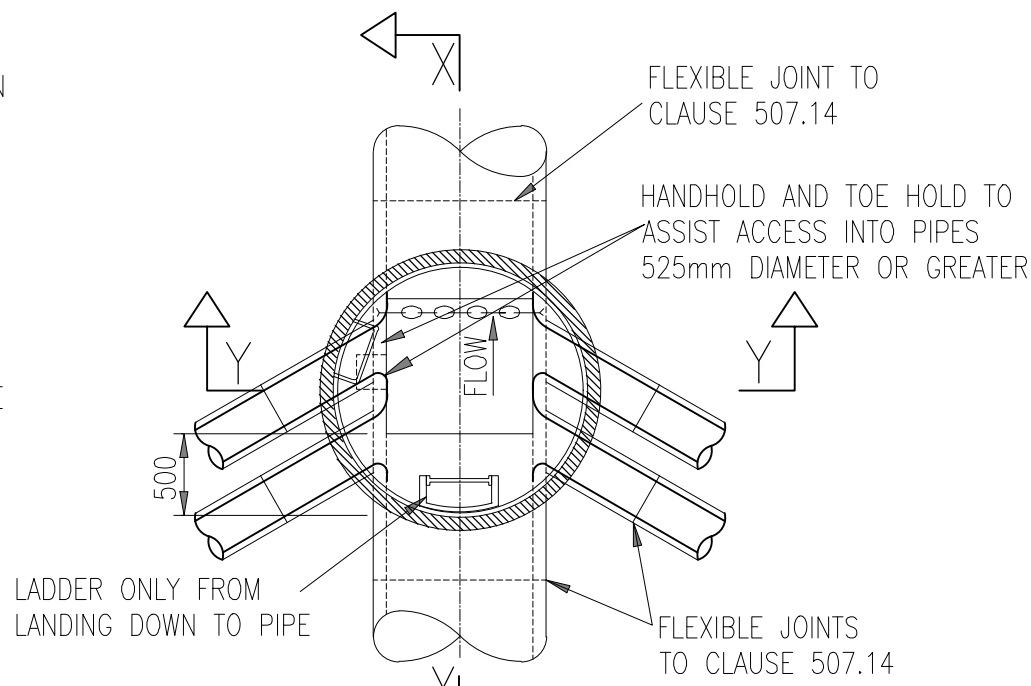
SECTION Y-Y

NOTES:

- ALL DIMENSIONS ARE IN MILLIMETRES.
- CHAMBER WALLS AND COVER SLAB TO BE CONSTRUCTED IN PRECAST CONCRETE TO BS 5911-3 AND IS EN 1917.
- FOR INVERT DETAILS, NUMBER OF BRANCHES, DETAILS OF PIPES AND TYPE OF COVER AND FRAME SEE APPENDIX 5/1.
- MORTAR TO BE TO CLAUSE 507.13.
- SAFETY CHAIN REQUIRED WHERE PIPE IS GREATER THAN 600 DIAMETER. SEE DRAWING No RCD/500/13 FOR DETAILS OF SAFETY CHAIN AND HANDHOLDS.
- MANHOLE COVER ARRANGEMENT IN CARRIAGEWAYS TO BE IN ACCORDANCE WITH RCD/500/14.
- FLEXIBLE JOINTS TO BE IN ACCORDANCE WITH CLAUSE 507.14 AND RCD/500/14.

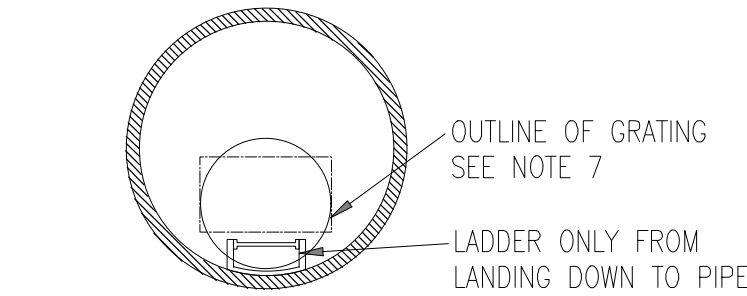


SECTION X-X

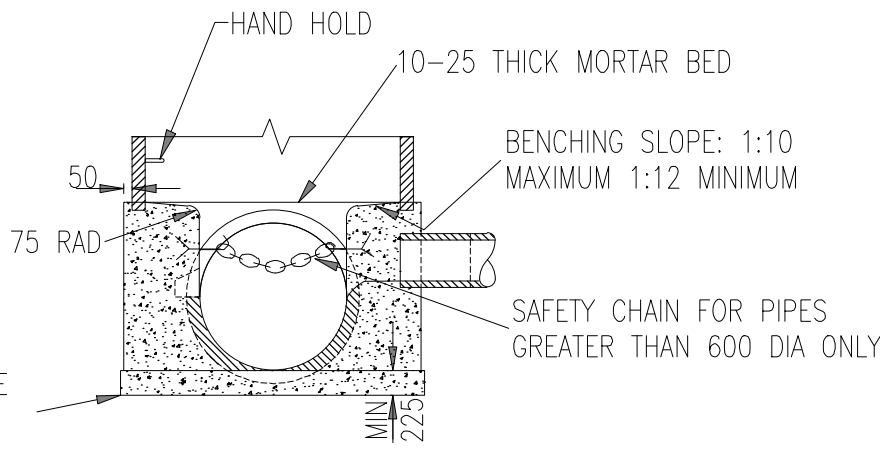


PLAN ON STRAIGHT INVERT
(UNDER LANDING SLAB)

CHAMBER TYPE E
(PRECAST CONCRETE MANHOLE)



PLAN ON LANDING



SECTION Y-Y

NOTES:

- ALL DIMENSIONS ARE IN MILLIMETRES.
- CHAMBER WALLS, COVER SLAB AND LANDING SLAB TO BE CONSTRUCTED IN PRECAST CONCRETE TO BS 5911-3 AND IS EN 1917.
- FOR INVERT DETAILS, NUMBERS OF BRANCHES, DETAILS OF PIPES AND TYPE OF COVER AND FRAME SEE APPENDIX 5/1.
- MORTAR TO BE TO CLAUSE 507.13.
- SAFETY CHAIN REQUIRED WHERE PIPE IS GREATER THAN 600 DIAMETER. FOR DETAILS OF SAFETY CHAIN, HANDHOLD AND LADDER SEE DRAWING No RCD/500/13.
- FOR DETAILS OF HINGED GRATING SEE DRAWING No RCD/500/7.
- TOE HOLD REQUIRED WHERE PIPE IS 525 DIAMETER OR GREATER SEE DRAWING No RCD/500/13.
- MANHOLE COVER ARRANGEMENT IN CARRIAGEWAYS TO BE IN ACCORDANCE WITH RCD/500/14.
- FLEXIBLE JOINTS TO BE IN ACCORDANCE WITH CLAUSE 507.14 AND RCD/500/14.

DO NOT SCALE FROM THIS DRAWING. USE FIGURED DIMENSIONS IN ALL CASES. VERIFY DIMENSIONS ON SITE AND REPORT ANY DISCREPANCIES TO THE DESIGNERS IMMEDIATELY. THIS DRAWING IS TO BE READ IN CONJUNCTION WITH THE DESIGNERS SPECIFICATION. © THIS DRAWING IS COPYRIGHT AND MAY ONLY BE REPRODUCED WITH THE DESIGNERS PERMISSION.

NOTES:

- ALL DRAWINGS ARE TO BE READ IN CONJUNCTION WITH ALL RELEVANT SPECIFICATIONS, BILLS OF QUANTITIES, SERVICES AND ENGINEERING DRAWINGS.
- ANY DISCREPANCIES BETWEEN THESE DOCUMENTS SHALL BE BROUGHT TO THE ATTENTION OF THE ENGINEER.
- ALL DIMENSIONS ARE IN METERS UNLESS OTHERWISE STATED.
- USE DIMENSIONS ON DRAWINGS (DO NOT SCALE FROM DRAWINGS).
- GRID AND COORDINATES ARE IN METRES RELATIVE TO I.T.M.

0		21.11.25		ISSUED FOR PLANNING		JK		CF	
REV		DATE		DESCRIPTION		BY		APP	
PROJECT:									
ROS AN MHIL DEEP WATER QUAY									
TITLE:									
DRAINAGE GENERAL DETAILS									
CLIENT:									
DEPARTMENT OF AGRICULTURE, FOOD & THE MARINE									
<div><div>MWP</div><div>ENGINEERING AND ENVIRONMENTAL CONSULTANTS</div><div>CORK TRALEE LONDON LIMERICK</div><div>mwp.ie</div></div>									
DRAWN:		CHECKED:		APPROVED:					
JK		CF		CF					
PROJECT NUMBER:		DATE:		SCALE @ A1:					
24984		NOVEMBER 2025		AS SHOWN					
ACCEPTANCE CODE:		PURPOSE OF ISSUE:				PURPOSE CODE:			
S		ISSUED FOR PLANNING PERMISSION				P3			
DRAWING NUMBER:								REV:	
24984-XX-XXX-DR-MWP-CE-5408								0	